

## Births: Final Data for 2010

by Joyce A. Martin, M.P.H.; Brady E. Hamilton, Ph.D.; Stephanie J. Ventura, M.A.; Michelle J.K. Osterman, M.H.S.; Elizabeth C. Wilson, M.P.H.; and T.J. Mathews, M.S., Division of Vital Statistics

### Abstract

**Objectives**—This report presents 2010 data on U.S. births according to a wide variety of characteristics. Data are presented for maternal characteristics including age, live-birth order, race and Hispanic origin, marital status, attendant at birth, method of delivery, and infant characteristics (period of gestation, birthweight, and plurality). Birth and fertility rates by age, live-birth order, race and Hispanic origin, and marital status also are presented. Selected data by mother’s state of residence are shown, as well as birth rates by age and race of father. Trends in fertility patterns and maternal and infant characteristics are described and interpreted.

**Methods**—Descriptive tabulations of data reported on the birth certificates of the 4.0 million births that occurred in 2010 are presented. Denominators for population-based rates are postcensal estimates derived from the U.S. 2010 census.

**Results**—The number of births declined to 3,999,386 in 2010, 3 percent less than in 2009. The general fertility rate also declined 3 percent, to 64.1 per 1,000 women aged 15–44. The teen birth rate fell 10 percent to 34.2 per 1,000. Birth rates for women in each 5-year age group from 20 through 39 years declined, but the rate for women aged 40–44 continued to rise. The total fertility rate (estimated number of births over a woman’s lifetime) was down 4 percent to 1,931 per 1,000 women. The number, rate, and percentage of births to unmarried

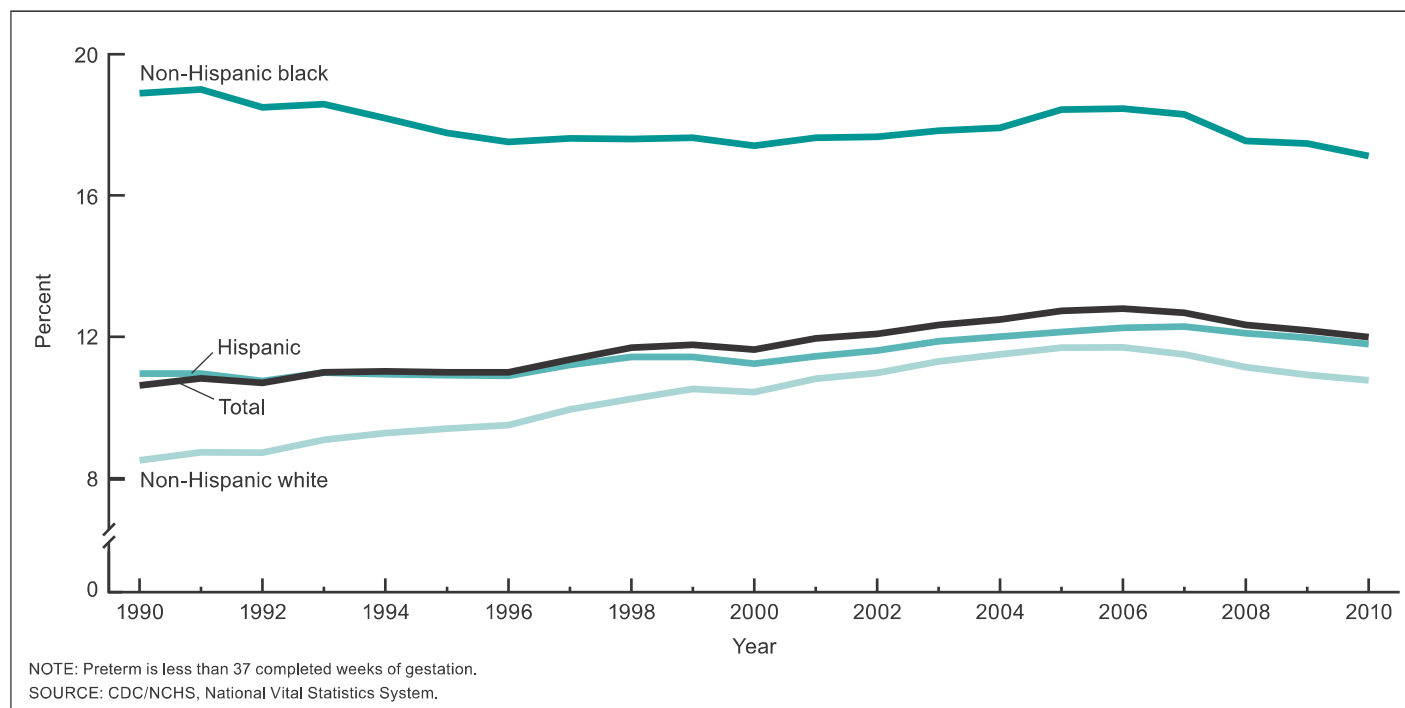


Figure 1. Preterm birth rates, by race and Hispanic origin: United States, 1990–2010

**Table 3. Birth rates, by age of mother, live-birth order, and race of mother: United States, 2010**

[Rates are births per 1,000 women in specified age and racial group. Fertility rate computed by relating total births, regardless of age of mother, to women aged 15–44. Populations based on counts enumerated as of April 1, 2010. Live-birth order refers to number of children born alive to mother. Figure for live-birth order not stated are distributed]

Live-birth order and race of mother	Age of mother										
	15–44 years	10–14 years	15–19 years			20–24 years	25–29 years	30–34 years	35–39 years	40–44 years	45–49 years <sup>1</sup>
			Total	15–17 years	18–19 years						
All races . . . . .	64.1	0.4	34.2	17.3	58.2	90.0	108.3	96.5	45.9	10.2	0.7
1st child . . . . .	25.9	0.4	28.0	15.8	45.2	45.0	40.4	28.1	10.4	2.3	0.2
2nd child . . . . .	20.2	0.0	5.4	1.4	11.0	29.5	35.8	33.2	14.9	2.9	0.2
3rd child . . . . .	10.6	*	0.8	0.1	1.8	11.3	19.7	19.7	10.4	2.1	0.1
4th child . . . . .	4.4	*	0.1	0.0	0.2	3.2	8.0	9.1	5.3	1.2	0.1
5th child . . . . .	1.7	*	0.0	*	0.0	0.8	2.8	3.6	2.4	0.7	0.0
6th and 7th child . . . . .	1.0	*	*	*	*	0.2	1.3	2.3	1.7	0.6	0.0
8th child and over . . . . .	0.3	*	*	*	*	0.0	0.2	0.6	0.7	0.4	0.0
White . . . . .	64.4	0.3	31.9	15.8	54.8	87.9	111.9	100.5	46.4	10.0	0.6
1st child . . . . .	25.9	0.3	26.3	14.5	43.1	44.8	42.3	29.0	10.5	2.3	0.2
2nd child . . . . .	20.5	0.0	4.9	1.2	10.1	29.1	37.7	34.8	14.9	2.8	0.2
3rd child . . . . .	10.8	*	0.7	0.1	1.5	10.5	20.3	21.1	10.8	2.1	0.1
4th child . . . . .	4.4	*	0.1	0.0	0.1	2.7	7.9	9.5	5.5	1.2	0.1
5th child . . . . .	1.6	*	0.0	*	0.0	0.6	2.5	3.6	2.4	0.7	0.0
6th and 7th child . . . . .	0.9	*	*	*	*	0.1	1.0	2.1	1.7	0.6	0.0
8th child and over . . . . .	0.3	*	*	*	*	0.0	0.1	0.5	0.7	0.4	0.0
Black . . . . .	66.3	1.0	51.1	27.3	84.8	118.1	101.8	73.0	36.4	9.3	0.7
1st child . . . . .	26.3	1.0	40.8	24.6	63.6	54.1	28.5	16.0	6.9	1.8	0.2
2nd child . . . . .	18.9	0.0	8.6	2.5	17.2	38.0	31.8	21.3	9.9	2.3	0.2
3rd child . . . . .	11.2	*	1.5	0.2	3.4	17.5	21.9	16.8	8.4	2.0	0.1
4th child . . . . .	5.4	*	0.2	0.0	0.5	6.1	11.0	9.4	5.2	1.3	0.1
5th child . . . . .	2.4	*	0.0	*	0.1	1.8	5.1	4.7	2.7	0.8	0.0
6th and 7th child . . . . .	1.6	*	*	*	*	0.5	2.9	3.7	2.3	0.7	0.0
8th child and over . . . . .	0.5	*	*	*	*	0.1	0.5	1.2	1.1	0.4	0.0
American Indian or Alaska Native . . . . .	48.6	0.5	38.7	20.1	66.1	91.0	74.4	48.4	22.3	5.2	0.3
1st child . . . . .	17.5	0.5	30.4	18.1	48.3	37.1	16.7	7.9	3.1	0.7	*
2nd child . . . . .	13.1	*	6.9	1.8	14.4	30.8	21.0	11.2	4.4	1.0	*
3rd child . . . . .	8.6	*	1.3	*	3.0	15.6	17.4	10.8	4.6	1.0	*
4th child . . . . .	4.8	*	0.1	*	0.3	5.5	10.8	8.0	3.9	0.7	*
5th child . . . . .	2.4	*	*	*	*	1.5	5.2	4.9	2.6	0.6	*
6th and 7th child . . . . .	1.7	*	*	*	*	0.3	2.9	4.3	2.7	0.7	*
8th child and over . . . . .	0.5	*	*	*	*	*	0.4	1.2	1.0	0.5	*
Asian or Pacific Islander . . . . .	59.2	0.1	10.9	5.1	18.7	42.6	91.5	113.6	62.8	15.1	1.2
1st child . . . . .	26.9	0.1	9.0	4.6	14.9	25.6	50.6	46.8	18.4	4.2	0.4
2nd child . . . . .	21.0	*	1.7	0.5	3.2	11.9	27.1	46.0	26.5	5.5	0.4
3rd child . . . . .	7.3	*	0.2	*	0.5	3.7	9.0	13.5	11.6	3.0	0.2
4th child . . . . .	2.4	*	*	*	*	1.1	3.1	4.5	3.8	1.2	0.1
5th child . . . . .	0.9	*	*	*	*	0.3	1.1	1.5	1.3	0.5	0.0
6th and 7th child . . . . .	0.5	*	*	*	*	0.1	0.6	1.0	0.8	0.4	0.1
8th child and over . . . . .	0.2	*	*	*	*	*	0.1	0.3	0.3	0.2	0.0

\* Figure does not meet standards of reliability or precision; based on fewer than 20 births in numerator.

0.0 Quantity more than zero but less than 0.05.

<sup>1</sup>Birth rates computed by relating births to women aged 45 and over to women aged 45–49; see **Technical Notes**.

NOTES: Race and Hispanic origin are reported separately on birth certificates. Race categories are consistent with 1977 Office of Management and Budget standards. Thirty-eight states and the District of Columbia reported multiple-race data for 2010 that were bridged to single-race categories for comparability with other states; see **Technical Notes**. In this table, all women, including Hispanic women, are classified only according to their race; see **Technical Notes**.